

YEAR

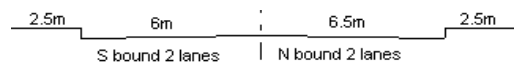
2013

LINK

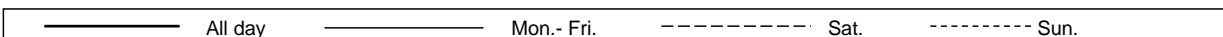
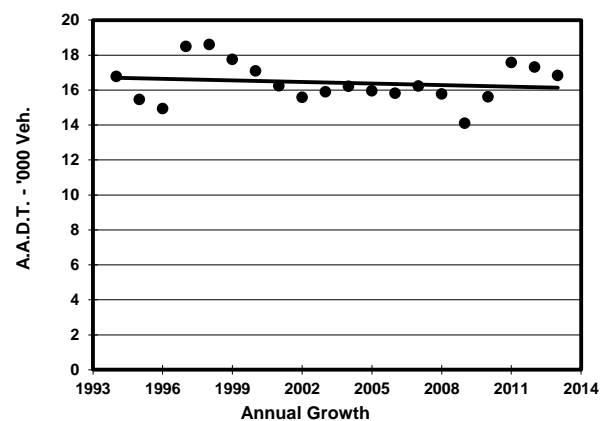
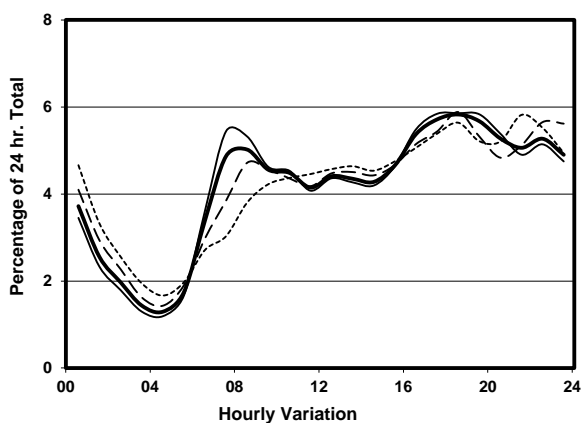
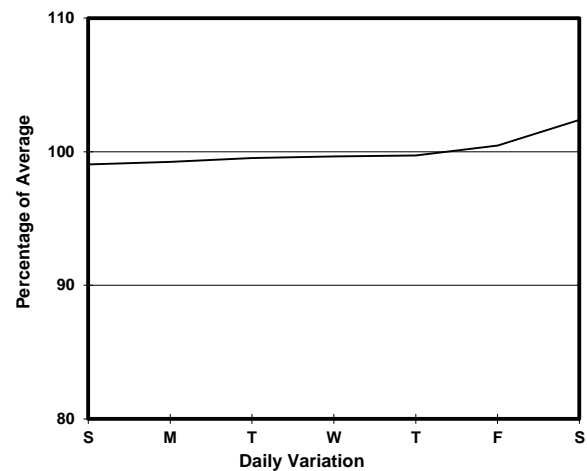
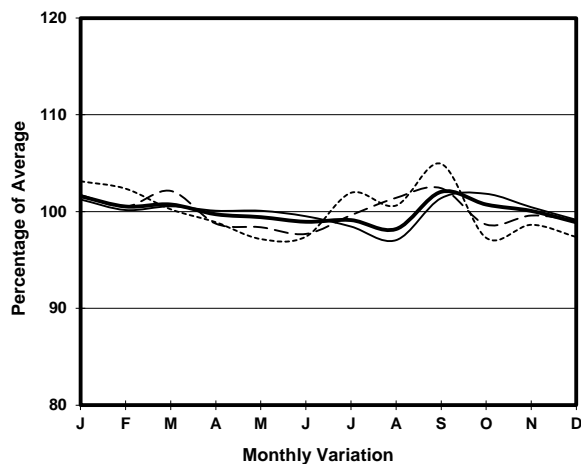
HIU KWONG ST (from SAU MING RD to HIP WO ST)

CORE STATION
ROAD NETWORK
ROAD TYPE

3018
MAJOR
DISTRICT DISTRIBUTOR



1. TRAFFIC FLOW VARIATION AND GROWTH



2. TRAFFIC CHARACTERISTICS (BY DIRECTION)

Parameter	All - Day	Mon. - Fri.	Sat.	Sun.
SOUTH BOUND				
A.A.D.T.	8950	8890	9270	8910
R 12 / 24 - %	56.3	57	55.5	54.1
R 16 / 24 - %	79.6	80.4	77.9	77.2
AM Peak Hour	0700-0800	0700-0800	0900-1000	0900-1000
One-way flow at AM peak hour	390	440	400	360
T - % (AM)	-	-	-	-
PM Peak Hour	1800-1900	1800-1900	1800-1900	1800-1900
One-way flow at PM peak hour	560	560	570	520
T - % (PM)	-	-	-	-
Prop.of commercial vehicles - 16 hr.	-	-	-	-
NORTH BOUND				
A.A.D.T.	7890	7910	7970	7770
R 12 / 24 - %	59.3	60.6	57	54.9
R 16 / 24 - %	78.3	79.4	76.3	75.1
AM Peak Hour	0800-0900	0800-0900	0800-0900	0900-1000
One-way flow at AM peak hour	470	510	430	340
T - % (AM)	-	-	-	-
PM Peak Hour	1700-1800	1700-1800	1800-1900	1800-1900
One-way flow at PM peak hour	430	440	450	420
T - % (PM)	-	-	-	-
Prop.of commercial vehicles - 16 hr.	-	-	-	-

3. OTHER INFORMATION AND COMMENT